



SWASTIK AGRI SCIENCE

INSECTICIDES | FUNGICIDES | HERBICIDES | PGR



Confidence For
REAL CROP **PROTECTION**





SWASTIK
AGRI SCIENCE

WP
Wettable
Powder

SC
Suspension
Concentrate

EC
Emulsifiable
Concentrate

SP
Soluble
Powder

WDG
Water
Dispersible
Granules
(See DF)

ZC
Mixed
Formulation
of CS & SC

SL
Soluble
Concentrate

POISON

DANGER

CAUTION

POISON

Confidence For REAL CROP **PROTECTION**



ABOUT US

We are

SWASTIK AGRISCIENCE

We are leading manufacturer and supplier of Insecticides, Fungicides, Weedicide and Biological Products. These are precisely processed by our experienced and adroit team of professionals using best grade chemical compounds combined with contemporary processing technique.

These products are widely demanded for their exceptional features such as high effectiveness, accurate composition, cost-effectiveness and safe usage.

Moreover, the chemical compounds that are used to process this range is procured from reliable and certified vendors of the industry keeping in mind set industry norms. These products are offered in different packaging options as per the requirements of the clients.



Higher Crop Yield



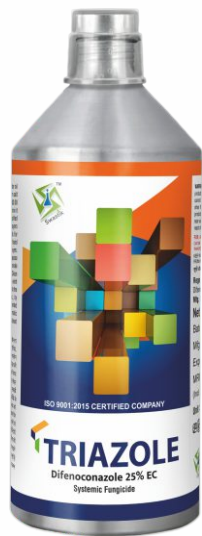
Quality Produce



Cost Effective

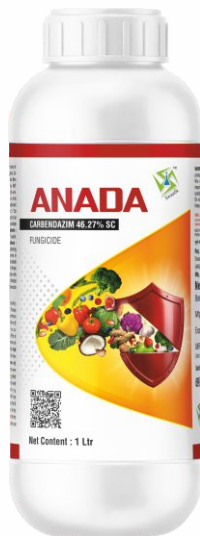


TRIAZOLE



DIFENOCONAZOLE 25% EC
PACKING : 100/250/500/1 Ltr

ANADA



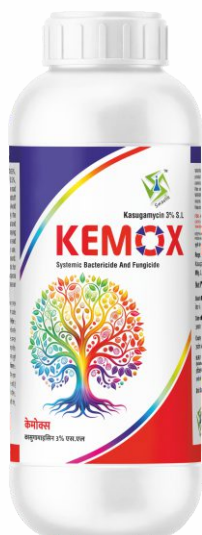
CARBENDAZIM 46.27 % SC
PACKING : 100/250/500/1 Ltr

INNOVIX ULTRA



**CARBOXIN 17.5% +
THIRAM 17.5% FF**
PACKING : 100/250/500/1 Ltr

KEMOX



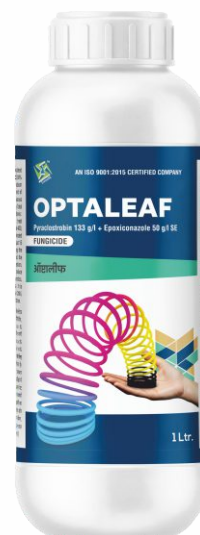
KASUGAMYCIN 3% SL
PACKING : 250/500/1 Ltr

MANCOBIN



**MANCOZEB 40 % +
AZOXYSTROBIN 7 % OS**
PACKING : 250/500/1 Ltr

OPTALEAF



**PYRACLOSTROBIN 133 G/L +
EPOXICONAZOLE 50 G/L SE**
PACKING : 300/600/1 Ltr

CYAZOFAMID 34.5% SC

PACKING : 40/80/400 ml

**AZOXYSTROBIN 4.8% +
CHLOROTHALONIL 40.0% SC**

PACKING : 150/300/600 ml

CRYZOMAN CHLOXYSTER



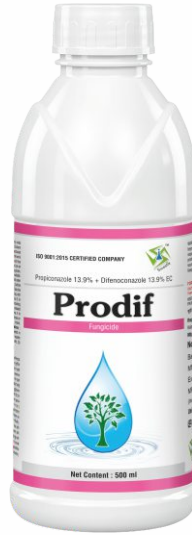


TUNING



VALIDAMYCIN 3% L
PACKING : 250/500/1 Ltr

PRODIF



**PROPICONAZOLE 13.9% +
DIFENOCONAZOLE 13.9% EC**
PACKING : 100/250/500/1 Ltr

CONTECT PLUS



HEXACONAZOLE 5% SC
PACKING : 250/500/1/2.5/5 Ltr

PROZAL WAY



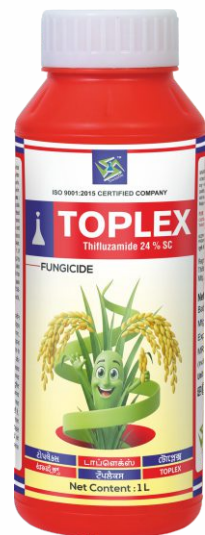
**PICOXYSTROBIN 7.05% +
PROPICONAZOLE 11.71% SC**
PACKING : 200/400/1 Ltr

MAGIC SULF



SULPHUR 55.16% SC
PACKING : 500/1/5 Ltr

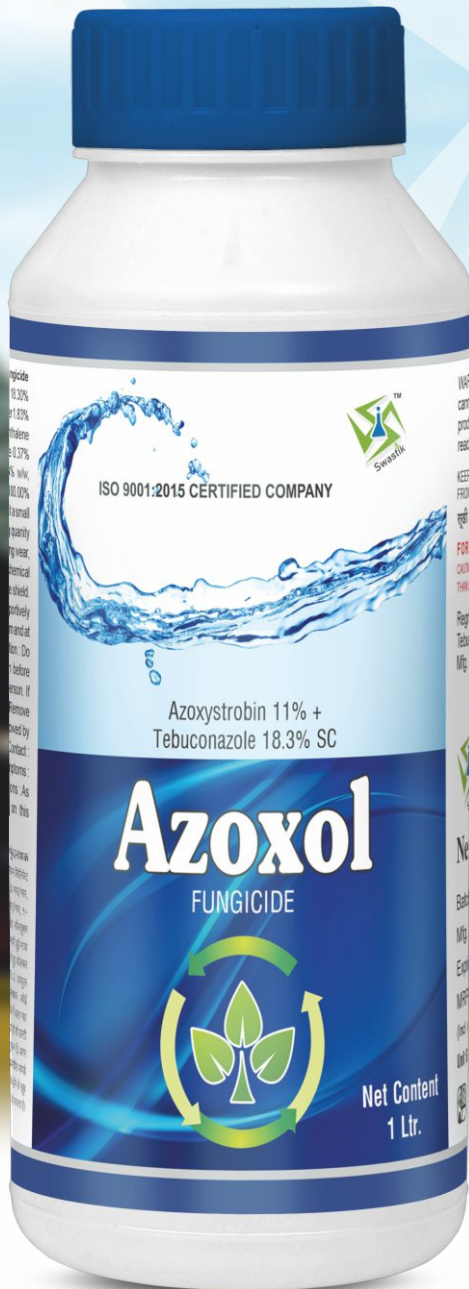
TOPLEX



THIFLUZAMIDE 24 % SC
PACKING : 250/500/1 Ltr

**AZOXYSTROBIN 11% +
TEBUCONAZOLE 18.3% SC**
PACKING : 100/250/500/1 Ltr

AZOXOL



**AZOXYSTROBIN 16.7 % +
TRICYCLAZOLE 33.3% SC**
PACKING : 250/500/1 Ltr

AZOSTRI SUPER





MAJOR



**METALAXYL-M 3.3% +
CHLOROTHALONIL 33.1% SC**
PACKING : 100/250/500/1 Ltr

SAS-ZIRAM



ZIRAM 27% SC
PACKING : 500/1 Ltr

ORIENT



TEBUCONAZOLE 25.9% EC
PACKING : 250/500/1 Ltr

KRENK



**KRESOXIM-METHYL 15% +
CHLOROTHALONIL 56% WG**
PACKING : 250/500/1 Kg

CONTECT SUPER



HEXAACONAZOLE 75% WG
PACKING : 100/250/500 gm

SULFAVET



SULPHUR 80% WDG
PACKING : 500/1/3/5/7/15 Kg

AZOXYSTROBIN 18.2% + DIFENOCONAZOLE 11.4% SC

PACKING : 100/250/500/1 Ltr

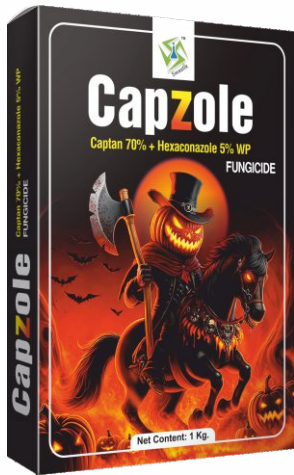
AZOSTAR TOP



FUNGICIDE

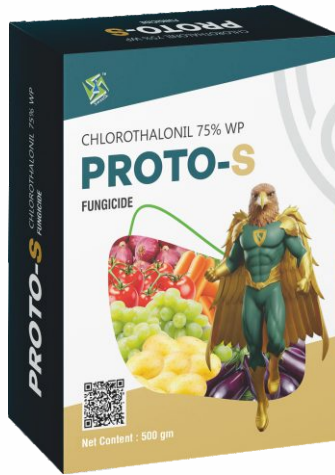


CAPZOLE



**CAPTAN 70%+
HEXACONAZOLE 5% WP**
PACKING : 250/500/1 Kg

PROTO-S



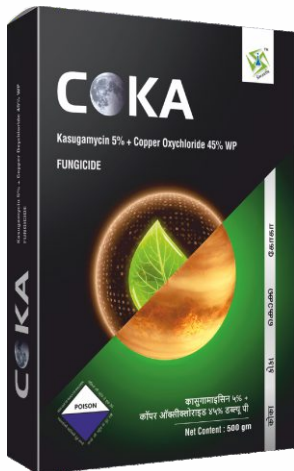
CHLOROTHALONIL 75% WP
PACKING : 250/500 gm

S-COP



**COPPER OXYCHLORIDE
CONTAINING COPPER
CONTENTS 50.00% WP**
PACKING : 500 gm

COKA



**KASUGAMYCIN 5% +
COPPER OXYCHLORIDE 45% WP**
PACKING : 100/250/500/1 Kg

GREEN STON



CAPTAN 50% WP
PACKING : 250/500/1 Kg

SAFAR



**CARBENDAZIM 12% +
MANCOZEB 63% WP**
PACKING : 100/250/500/1 Kg

PYRACLOSTROBIN 20% WG

PACKING : 100/200/500 gm

STEWIT



**TEBUCONAZOLE 50% +
TRIFLOXYSTROBIN 25% WG**

PACKING : 100/200/500 gm

TEBUTRIX





VARCHASVA



CARBENDAZIM 50% WP
PACKING : 250/500/1 Kg

MAX-RUN



**CYMOXANIL 8% +
MANCOZEB 64% WP**
PACKING : 300/600/1200 gm

D-STRIKE



DIMETHOMORPH 50% WP
PACKING : 100/250/500 gm

MOTEL M-45



MANCOZEB 75 % WP
PACKING : 250/500/1 Kg

MAXMORE



METALAXYL 35% WS
PACKING : 100/250/500/1 Kg

METACOZEB



**METALAXYL 8% +
MANCOZEB 64% WP**
PACKING : 250/500/1 Kg

TEBUCONAZOLE 10% + SULPHUR 65% WG
PACKING : 250/500/1 Kg

SARVADHIK





TRISPOT



**PROPINEB 54.2% +
TRICYCLAZOLE 15 % WP**
PACKING : 250/500/1 Kg

DIVORA



**TEBUCONAZOLE 15% +
ZINEB 57% WDG**
PACKING : 250/500/1 Kg

TOPSEAL



THIOPHANATE METHYL 70% WP
PACKING : 250/500/1 Kg

TRIZEN



**TRICYCLAZOLE 18% +
MANCOZEB 62% WP**
PACKING : 250/500/1 Kg

BLASTBLOCK



TRICYCLAZOLE 75% WP
PACKING : 120 gm

INNOVIX WS

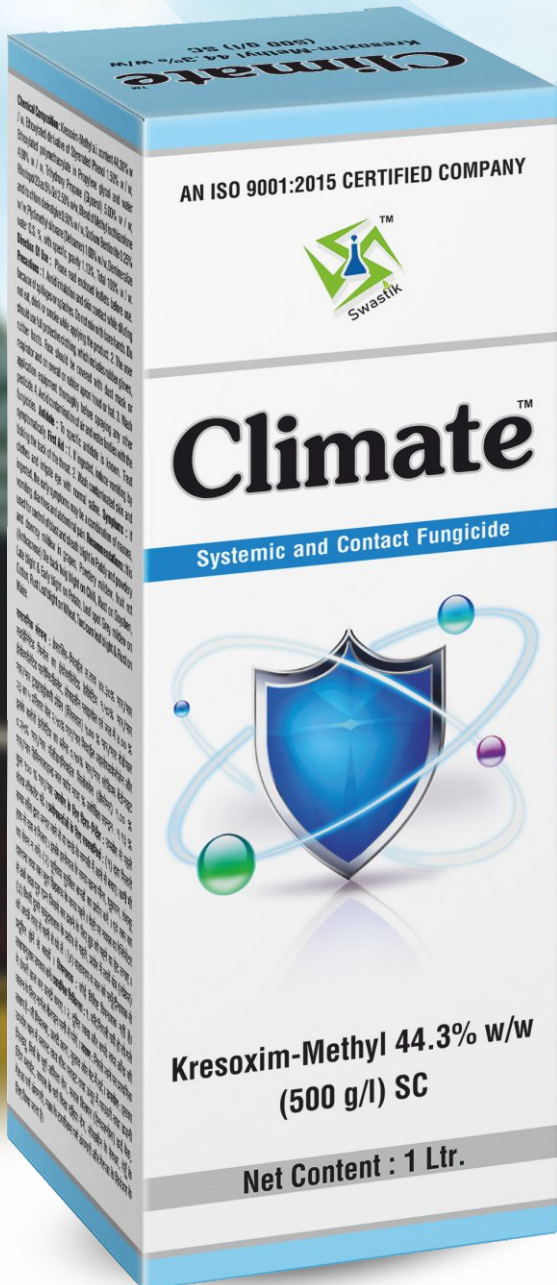


**CARBOXIN 37.5% +
THIRAM 37.5% WS**
PACKING : 100/250/500/1 Kg

**KRESOXIM-METHYL 44.3% W/W
(500 G/L) SC**

PACKING : 100/250/500/1 Ltr

CLIMATE



**PICOXYSTROBIN 6.78% +
TRICYCLAZOLE 20.33% SC**

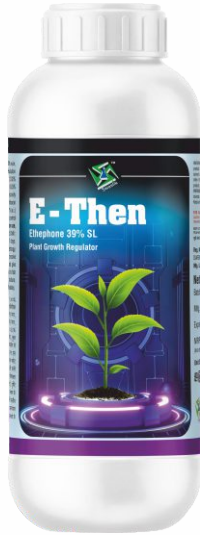
PACKING : 200/400/1 Ltr

SAFETRUST





E-THEN



ETHEPHON 39% S.L
PACKING : 100/250/500/1 Ltr

TRINOL



TRIACONTANOL EW 0.1% MIN.
PACKING : 250/500/1 Ltr

SPEED UP



SILICON SPREDER
PACKING : 50/100/250/500/1 Ltr

BLACK CARBON



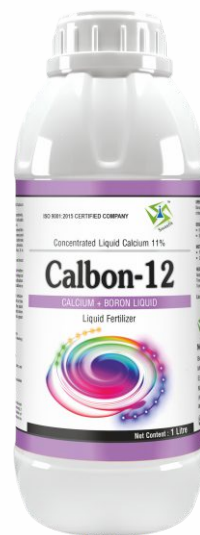
ORGANIC CARBON FERTILIZER
PACKING : 250/500/1 Ltr

CELLESTA



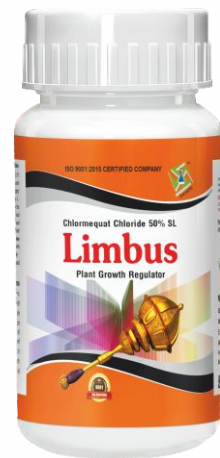
PACLOBUTRAZOL 23% SC
PACKING : 100/250/500/1 Ltr

CALBON 12



CONCENTRATED LIQUID CALCIUM 11%
PACKING : 500/1 Ltr

LIMBUS

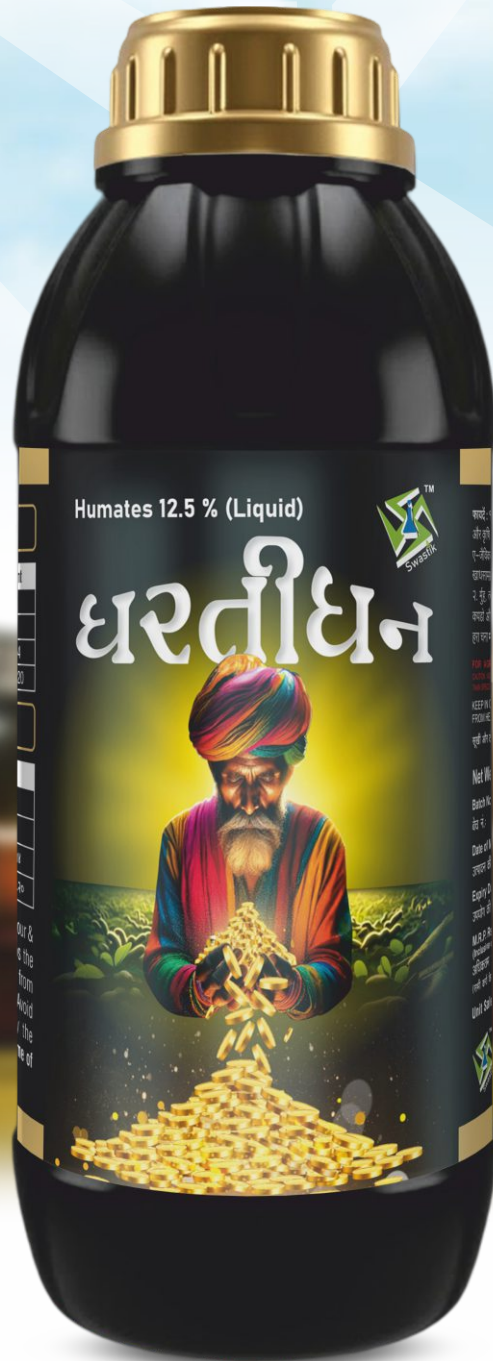


CHLORMEQUAT CHLORIDE 50% SL
PACKING : 250/500/1 Ltr

HUMATES 12.5 % (LIQUID)

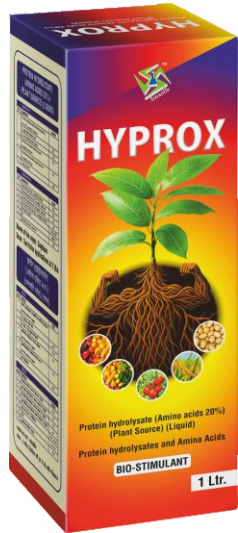
PACKING : 500/1/5 Ltr

DHARTIDHAN





HYPROX



AMINO ACIDS 20%
PACKING : 250/500/1 Ltr

PANCH-AMRUT



**Mixture of Seaweed extract;
Humic and Fulvic acid,
Amino acids and Vitamins (Liquid)**
PACKING : 250/500/1 Ltr

SUPER SONIC PLUS



**MIXTURE OF HUMIC ACID AND
SEAWEED EXTRACT - GRANULES**
PACKING : 10/25 Kg

BLACK POWER



**SUPER POTASSIUM
HUMIC ACID 98 %**
PACKING : 500/1 Kg

SAS BLACK DIAMOND



**HUMIC AND FULVIC ACID 76%
(POWDER)**
PACKING : 500/1 Kg

MIX - COMFIRT



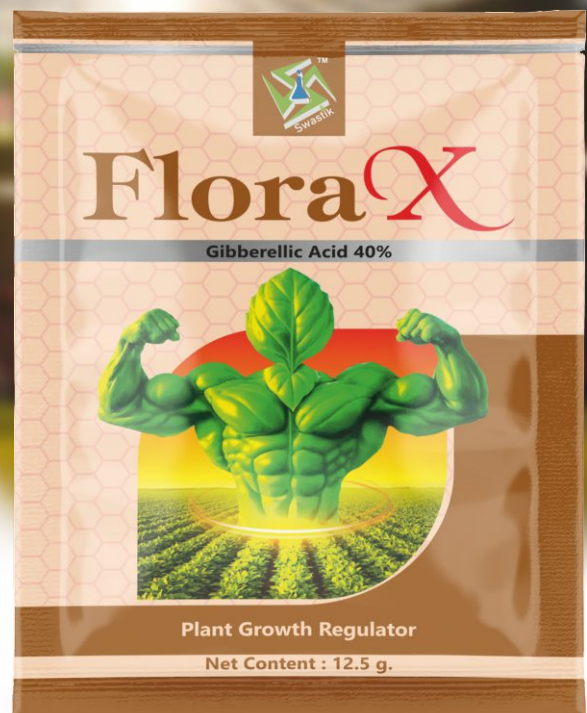
**MIX MICRONUTRIENT FERTILIZER
GRADE 4**
PACKING : 250/500 gm

GIBBERELIC ACID 0.001% L
PACKING : 100/250/500/1 Ltr

GIBBERELIC ACID 40% WSG
PACKING : 12.5/25 gm

NUTRI-GIB

FLORA-X



HUMIC AND FULVIC ACID 25.05% (LIQUID)

PACKING : 250/500/1 Ltr

HYDRO-Z



PACLOBUTRAZOLE 40% SC

PACKING : 50/100/250 ml

CELLESTA PLUS



HUMIC AND FULVIC ACID 76% (POWDER)

PACKING : 250/500/1 Kg

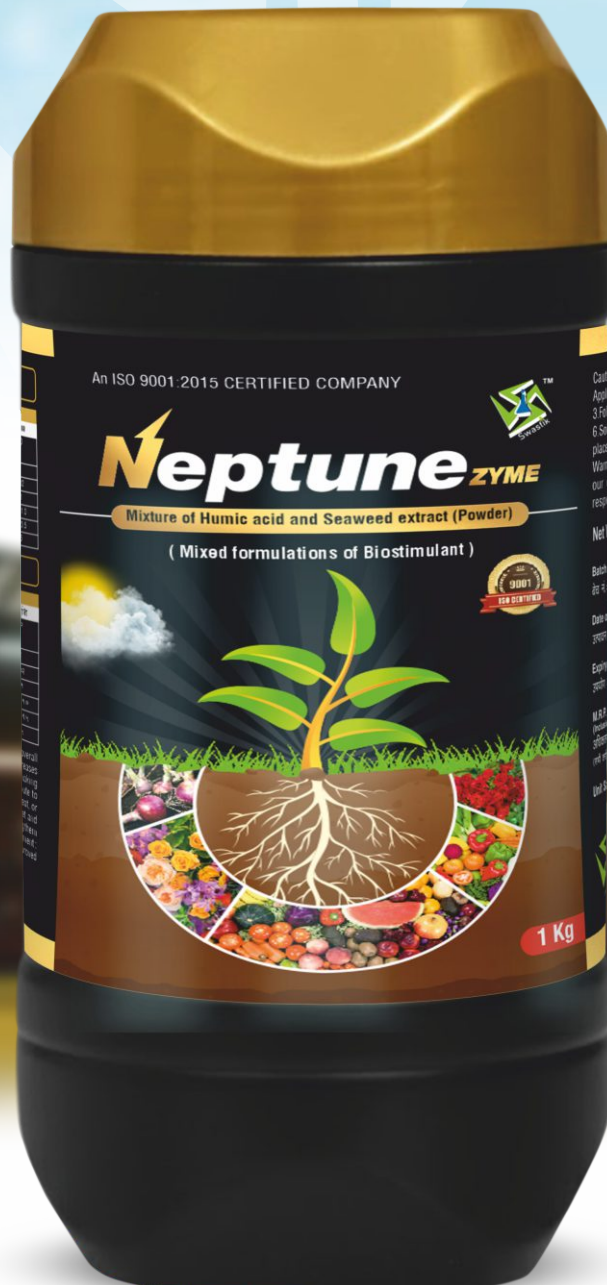
BLACK DIAMOND PLUS



MIXTURE OF HUMIC ACID AND
SEAWEED EXTRACT (POWDER)

PACKING : 250/500/1 Kg

NEPTUNE ZYME



MIXTURE OF HUMIC ACID AND
SEAWEED EXTRACT - GRANULES

PACKING : 4/10 Kg

DHARTISONA GR



MYCORRHIZA (VAM)

PACKING : 4/8 Kg

MYCO TREE



MEPIQUAT CHLORIDE 5 % AQUEOUS SOLUTION

PACKING : 100/250/500/1 Ltr

ANKUR



SILICON BASED NON-IONIC TANK MIX ADJUVANT

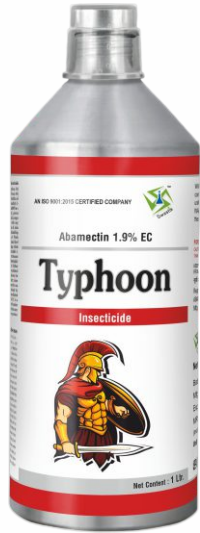
PACKING : 50/100/250/500/1 Ltr

SPEEDWAY SUPER





TYPHOON



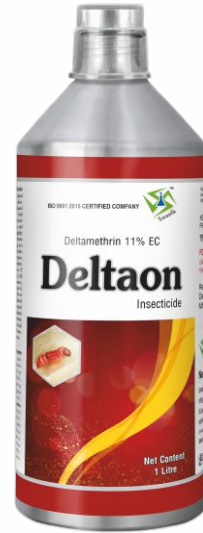
ABAMECTIN 1.9% EC
PACKING : 100/250/500/1 Ltr

ROKSTAR



BIFENTHRIN 10% EC
PACKING : 250/500/1 Ltr

DELTAON



DELTAMETHRIN 11% EC
PACKING : 100/250/500/1 Ltr

REDLINE PLUS



EMAMECTIN BENZOATE 1.9% EC
PACKING : 100/250/500/1 Ltr

ALL OUT SUPER



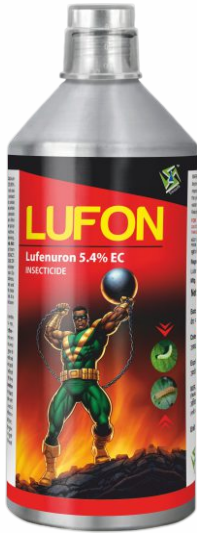
FIPRONIL 2.92% EC
PACKING : 100/250/500/1 Ltr

COSTA



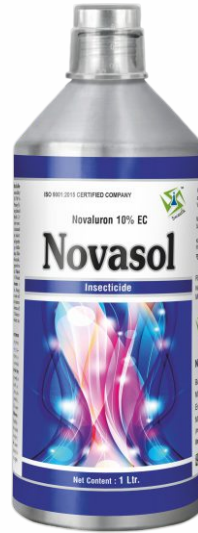
INDOXACARB 14.5% SC
PACKING : 100/250/500/1 Ltr

LUFON



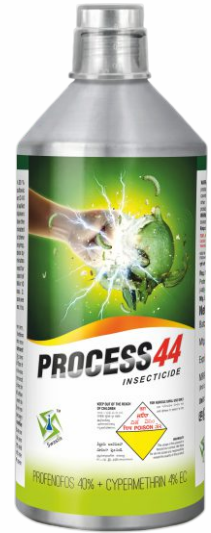
LUFENURON 5.4% EC
PACKING : 100/250/500/1 Ltr

NOVASOL



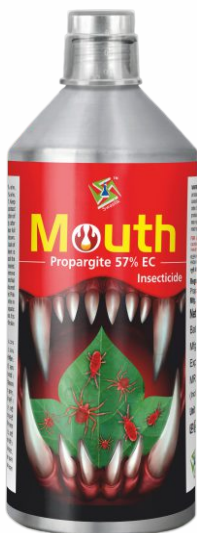
NOVALURON 10% EC
PACKING : 100/250/500/1 Ltr

PROCESS 44



**PROFENOFOS 40% +
CYPERMETHRIN 4% E.C.**
PACKING : 100/250/500/1/5 Ltr

MOUTH



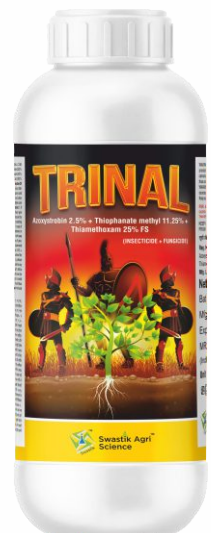
PROPARGITE 57% EC
PACKING : 100/250/500/1 Ltr

SOFTER



PYRIPROXYFEN 10% EC
PACKING : 500/1 Ltr

TRINAL



**AZOXYSTROBIN 2.5% +
THIOPHANATE METHYL 11.25% +
THIAMETHOXAM 25% FS**
PACKING : 100/200/400/1 Ltr



HELONIL



**CHLORANTRANILIPROLE 9.3% +
LAMBDCYHALOTHRIN 4.6% ZC**
PACKING : 50/100/250/500/1 Ltr

BAVAAL



**DIAFENTHIURON 47% +
BIFENTHRIN 9.4% SC**
PACKING : 250/500/1 Ltr

ZOXAN



HEXYTHIAZOX 5.45% EC
PACKING : 100/250/500/1 Ltr

INTERMIDA



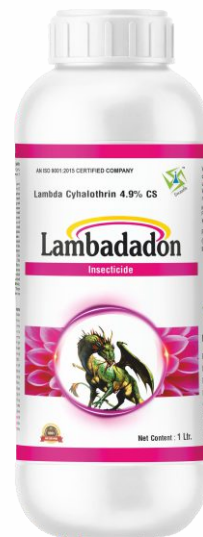
IMIDACLOPRID 17.8% SL
PACKING : 100/250/500/1 Ltr

INTERMIDA SUPER



IMIDACLOPRID 30.5% SC
PACKING : 100/250/500 ml

LAMBADADON



**LAMBDA-CYHALOTHRIN 4.9%
CAPSULE SUSPENSION**
PACKING : 250/500/1 Ltr

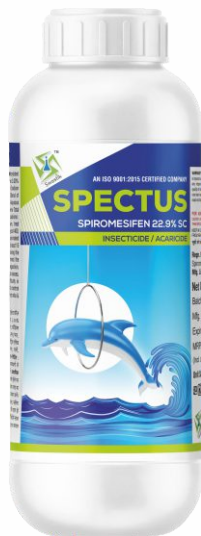
DIMETHOATE 30% EC
PACKING : 100/250/500/1 Ltr

TIGOR



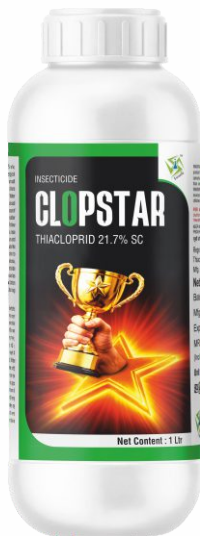


SPECTUS



SPIROMESIFEN 22.9% SC
PACKING : 100/250/500/1 Ltr

CLOPSTAR



THIACLOPRID 21.7% SC
PACKING : 100/250/500/1 Ltr

ADMIN



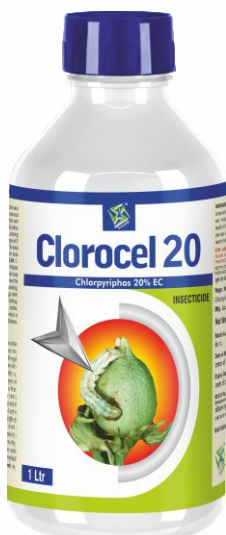
**THIAMETHOXAM 12.6% +
LAMBDA-CYHALOTHRIN 9.5% ZC**
FOR INDIGENOUS MANUFACTURE
PACKING : 100/250/500/1 Ltr

FANSUL



CARBOSULFAN 25% EC
PACKING : 250/500/1 Ltr

CLOROCEL 20



CHLORPYRIPHOS 20% EC
PACKING : 100/250/500/1 Ltr

CHLORTRIN 505

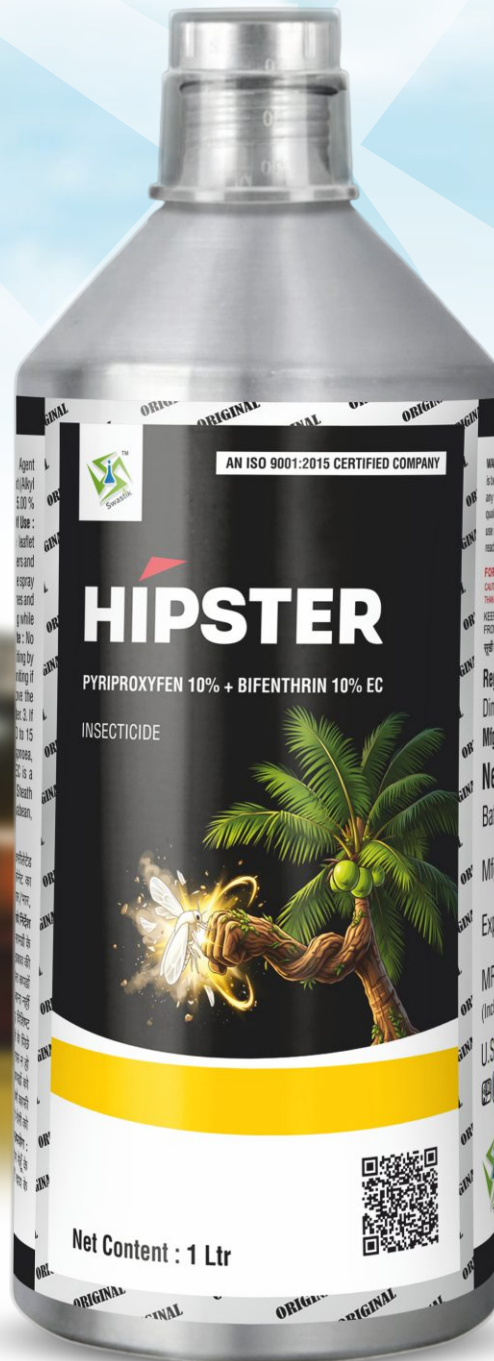


**CHLORPYRIPHOS 50% +
CYPERMETHRIN 5% EC**
PACKING : 100/250/500/1 Ltr

PYRIPROXYFEN 10% + BIFENTHRIN 10% EC

PACKING : 250/500/1 Ltr

HIPSTER



INSECTICIDE



CYPERON-25



CYPERMETHRIN 25% EC
PACKING : 100/250/500/1 Ltr

SONIC PLUS



**CYPERMETHRIN 3% +
QUINALPHOS 20% EC**
PACKING : 100/250/500/1 Ltr

CYPROTHRIN



**ETHION 40% +
CYPERMETHRIN 5% EC**
PACKING : 100/250/500/1 Ltr

LAVA



FENOBUCARB (B.P.M.C) 50% EC
PACKING : 100/250/500/1 Ltr

CREST



PROFENOPHOS 50% EC
PACKING : 100/250/500 ml

VORTEX



CHLORANTRANILIPROLE 18.5% SC
PACKING : 30/60/150/300 ml

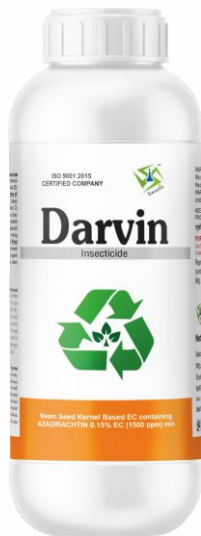
TOLFENPYRAD 15%EC
PACKING : 100/250/500/1 Ltr

KOTAKO YAMDOOT





DARVIN



**AZADIRACHTIN 0.15% EC
(1500 PPM) MIN.**

PACKING : 100/250/500/1 Ltr

TORIVIO



**AZADIRACHTIN 0.3% MIN.
(3000 PPM)**

PACKING : 100/250/500/1 Ltr

KERVOX



**AZADIRACHTIN 1%
(10000 PPM) MIN.**

PACKING : 250/500/1 Ltr

NOVATIN



**NOVALURON 5.25% +
EMAMECTIN BENZOATE 0.9% SC**

PACKING : 250/500/1 Ltr

UDON



FIPRONIL 5% SC

PACKING : 250/500/1 Ltr

VALIANT



SPINOSAD 45% SC

PACKING : 75/100/250/500 ml

CHLORFENAPYR 10% SC
PACKING : 100/250/500/1 Ltr

TEJVEER



INSECTICIDE



CITARA GOLD



THIAMETHOXAM 30% FS
PACKING : 100/250/500/1 Ltr

OMEXA



**CHLORANTRANILIPROLE 8.8% +
THIAMETHOXAM 17.5% SC**
PACKING : 100/250/500/1 Ltr

HEXAR



**IMIDACLOPRID 18.5% +
HEXAONAZOLE 1.5% FS**
PACKING : 100/250/500/1 Ltr

TENSHIN



CLOTHIANIDIN 50 % WDG
PACKING : 50/100/250 gm

TRAPPER



FIPRONIL 80% WG
PACKING : 20/40/100 gm

CITARA



THIAMETHOXAM 25% WG
PACKING : 100/250/500 gm

IMIDACLOPRID 70% WG
PACKING : 75/150/300 gm

INTERMIDA MAX



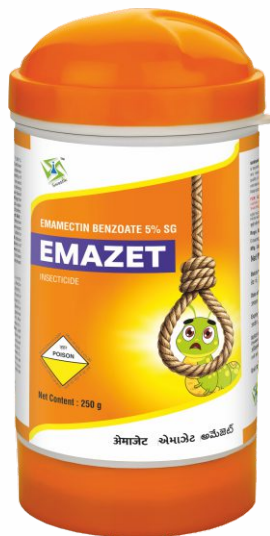


STRIKE-SG



THIAMETHOXAM 75% SG
PACKING : 50/100/250 gm

EMAZET



EMAMECTIN BENZOATE 5% SG
PACKING : 50/100/250/500 gm

RAION



ACEPHATE 95% SG
PACKING : 250/500/1 Kg

THUNDER PLUS



**DINOTEFURAN 15% +
PYMETROZINE 45% WG**
PACKING : 133.2/333/666 gm

OPWELL



PYMETROZINE 50% WG
PACKING : 120/250/500 gm

GPS



THIODICARB 75% WP
PACKING : 250/500/1 Kg

CHLORANTRANILIPROLE 47.85% SC

PACKING : 50/100/200 ml

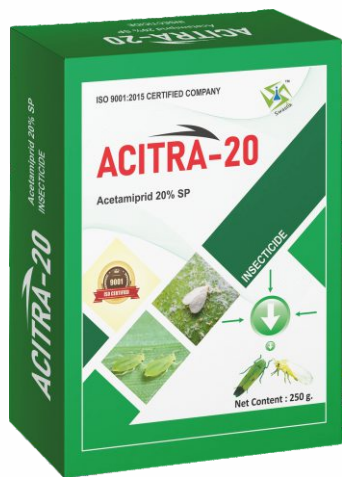
RAPTOR



INSECTICIDE

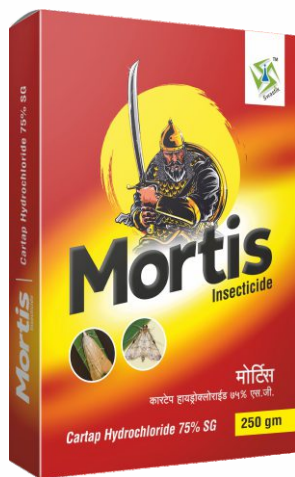


ACITRA-20



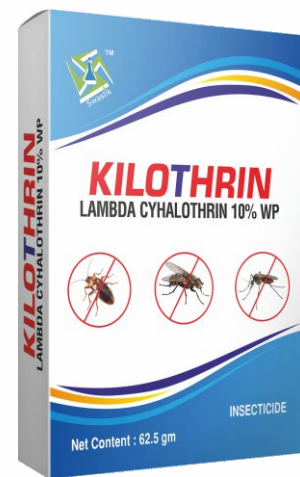
ACETAMIPRID 20% SP
PACKING : 50/100/250 gm

MORTIS



CARTAP HYDROCHLORIDE 75% SG
PACKING : 50/100/250 gm

KILOTHRIN



LAMBDCYHALOTHRIN 10% WP
PACKING : 62.5 gm

TOLBOUND



ACEPHATE 50% + FIPRONIL 5% WDG
PACKING : 250/500/1 Kg

NEXGUARD



ACEPHATE 50% + IMIDACLOPRID 1.8% SP
PACKING : 250/500/1 Kg

ACITOP

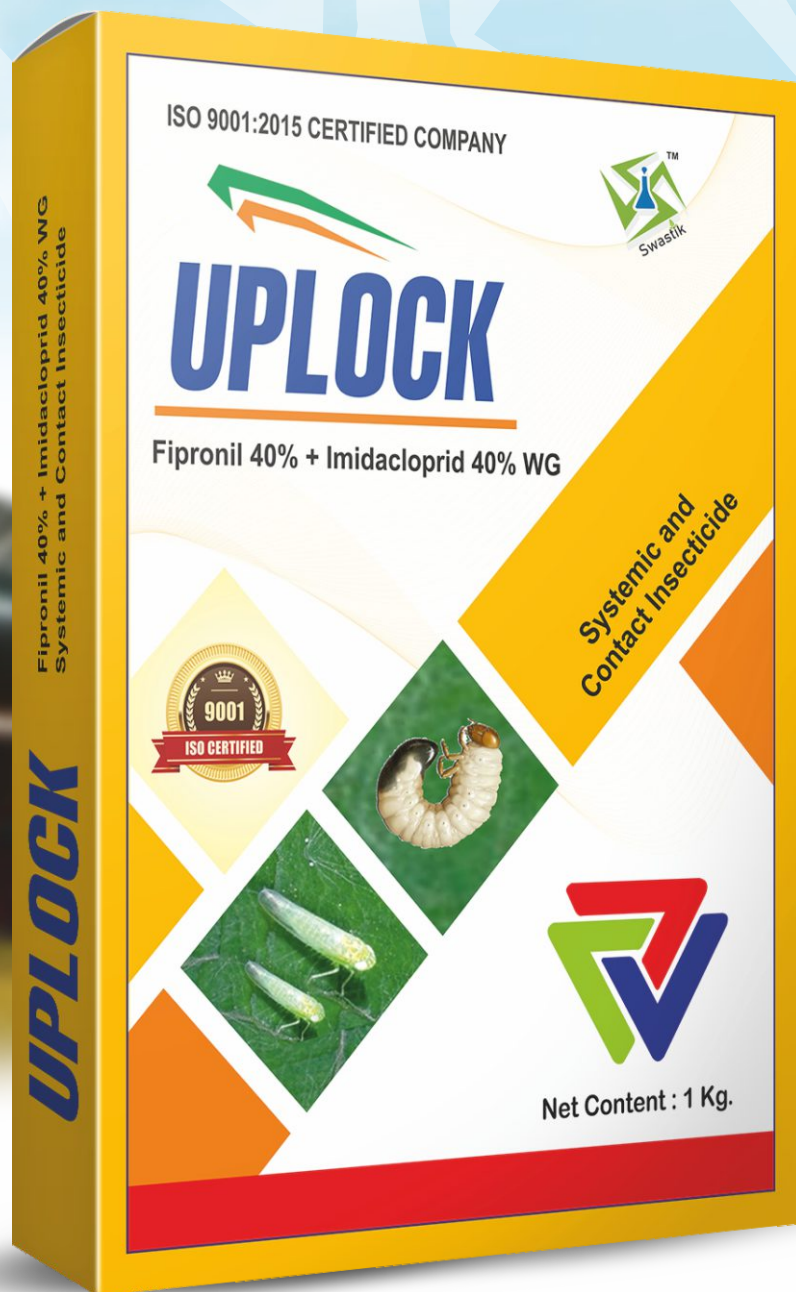


ACEPHATE 75% SP
PACKING : 250/500/1 Kg

FIPRONIL 40% + IMIDACLOPRID 40% WG

PACKING : 40/100/250 gm

UPLOCK



INSECTICIDE

TIGERWIN SUPER



**BUPROFENZIN 15% +
ACEPHATE 35% WP**
PACKING : 250/500/1 Kg

CARTOP



CARTAP HYDROCHLORIDE 50% SP
PACKING : 100/250/500 Kg

AGRI TONIC



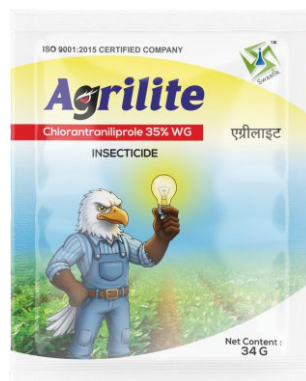
**DIAFENTHIURON 40.1% +
ACETAMIPRID 3.9% WP**
PACKING : 100/250/500/1 Kg

SELLPLUS



**ALUMINUM PHOSPHIDE 56%
POWDER**
PACKING : 10 gm

AGRILITE



CHLORANTRANILIPROLE 35% WG
PACKING : 34/100/200 gm

ARROW-Z



DIAFENTHIURON 50% WP
PACKING : 250/500 gm

GAMER



DINOTEFURAN 20% SG
PACKING : 100/250 gm

VORTEX GR



CHLORANTRANILIPROLE 0.4% GR
PACKING : 1/4 Kg

LEXOMA



**THIAMETHOXAM 1.0% +
CHLORANTRANILIPROLE 0.5% GR**
PACKING : 5 Kg

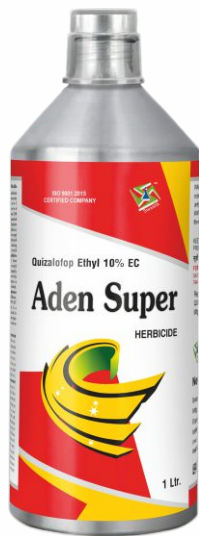


OXYPRO



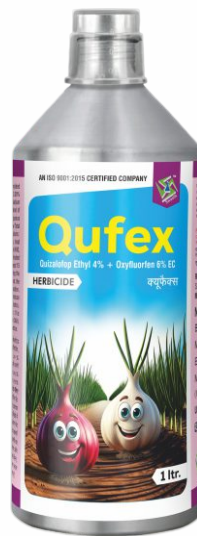
OXYFLOURFEN 23.5% E.C (W/W)
PACKING : 50/100/250 gm

ADEN SUPER



QUIZALOFOP ETHYL 10% EC
PACKING : 100/250/500/1 Ltr

QUFEX



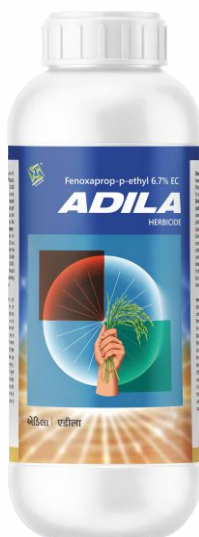
QUIZALOFOP ETHYL 4% + OXYFLOURFEN 6% EC
PACKING : 100/250/500/1 Ltr

TORRANDO SUPER



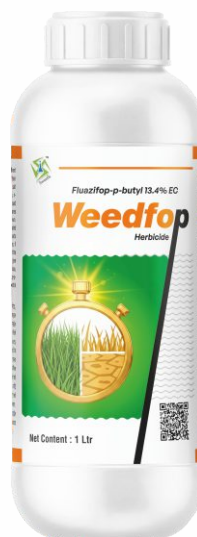
QUIZALOFOP-ETHYL 5% W/W EC
PACKING : 100/250/500/1 Ltr

ADILA



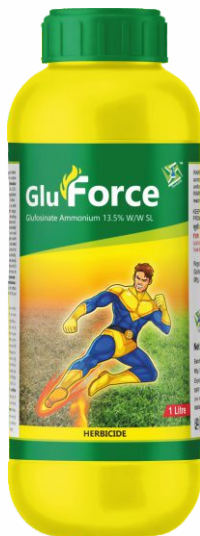
FENOXAPROP-P-ETHYL 6.7% EC
FOR INDIGENOUS MANUFACTURE
PACKING : 250/500/1 Ltr

WEEDFOP



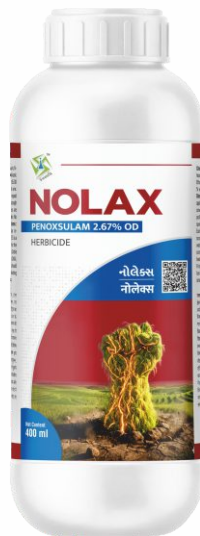
FLUAZIFOP-P-BUTYL 13.4% EC
PACKING : 100/250/500/1 Ltr

GLU FORCE



**GLUFOSINATE
AMMONIUM 13.5 % SL**
PACKING : 250/500/1 Ltr

NOLAX



PENOX SULAM 2.67% W/W OD
PACKING : 200/400/1 Ltr

WEEDSALT



2,4-D AMINE SALT 58% S.L.
PACKING : 250/500/1 Ltr

PARACLEAN



PARAQUAT DICHLORIDE 24% SL
PACKING : 500/1/5 Ltr

PENDISTOP



PENDIMETHALIN 30 % EC
PACKING : 250/500/1/5 Ltr

XYFAM



HALOXYFOP R METHYL 10.5% EC
PACKING : 100/400/1200 ml



C-ZAR



**PENDIMETHALIN 30% +
IMAZETHAPYR 2% EC**
PACKING : 500/1 Ltr

HELACLOR



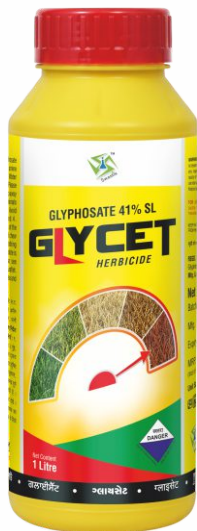
PRETILACHLOR 37% W/W EW
PACKING : 600/1200 ml

HELACLOR PLUS



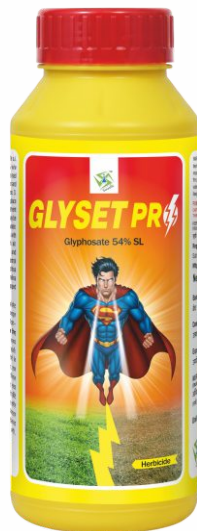
PRETILACHLOR 50% E.C.
PACKING : 250/500/1 Ltr

GLYCET



GLYPHOSATE 41% S.L.
PACKING : 500/1/5 Ltr

GLYSET PRO



**IPA SALT OF GLYPHOSATE 54% SL
FOR INDIGENOUS MANUFACTURE**
PACKING : 500/1 Ltr

BEZON



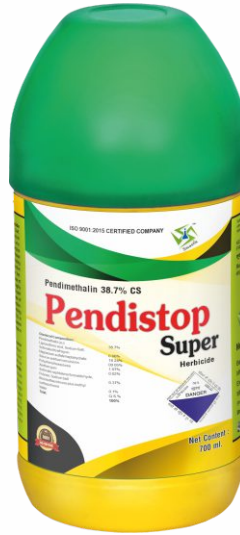
BISPYRIBAC SODIUM 10% W/V SC
PACKING : 100/250/500/1 Ltr

HELOZED



HALOSULFURON METHYL 75% WG
PACKING : 3.6/18/36 gm

PENDISTOP SUPER



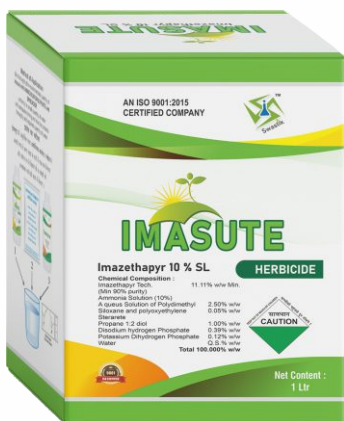
PENDIMETHALIN 38.7% CS
PACKING : 350/700/3500 ml

ATRIZO



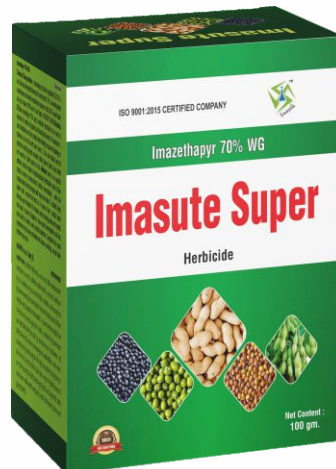
**MESOTRIONE 2.27% +
ATRAZINE 22.7% SC**
PACKING : 350/700/1400 ml

IMASUTE



IMAZETHAPYR 10 % SL
PACKING : 250/500/1 Ltr

IMASUTE SUPER



IMAZETHAPYR 70% WG
PACKING : 50/100 gm

LGRIP



METSULFURON METHYL 20% WP
PACKING : 8 gm



WINTEL



TEMBOTRIONE 34.4% W/W SC
PACKING : 57.5/115/230 ml

TORENZO



TOPRAMEZONE 336 G/L (W/V) SC
PACKING : 15/30/75 ml

DOMINO



AMETRIN 80% WG
PACKING : 250/500/1 kg

GLY 71



**AMMONIUM SALT OF
GLYPHOSATE 71% SG**
PACKING : 100 gm

ATRACLEAN



ATRAZINE 50% W.P.
PACKING : 250/500 gm

ORFINA



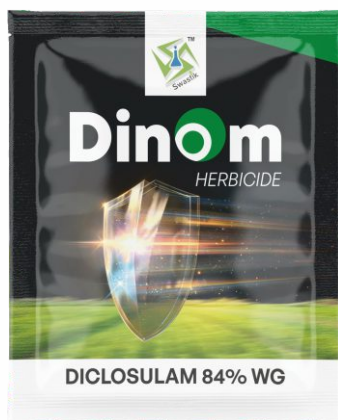
**BISPYRIBAC SODIUM 20% +
PYRAZOSULFURON ETHYL 15% WDG**
PACKING : 10/50/100 gm

CLODIGIL



CLODINAFOF - PROPARGYL 15% WP
PACKING : 160 gm

DINOM



DICLOSULAM 84% WG
PACKING : 12.4 gm

DUROKILL



DIURON 80 % W.P
PACKING : 500/1 Kg

S-METRO



METRIBUZIN 70% WP
PACKING : 250/500/1 Kg

Swastik Agri Science™

 Mo. 90999 32065

 info.swastikagriscience@gmail.com

 www.swastikagrisciences.com

 Survey No.158-P-9, Village-Garida, Bamanbor -Morbi N.H. No.27, Tal Vankaner, Dist. Morbi,
Gujarat, India, Pin-363621